

LANTANA PINES - PLAT NO. 1

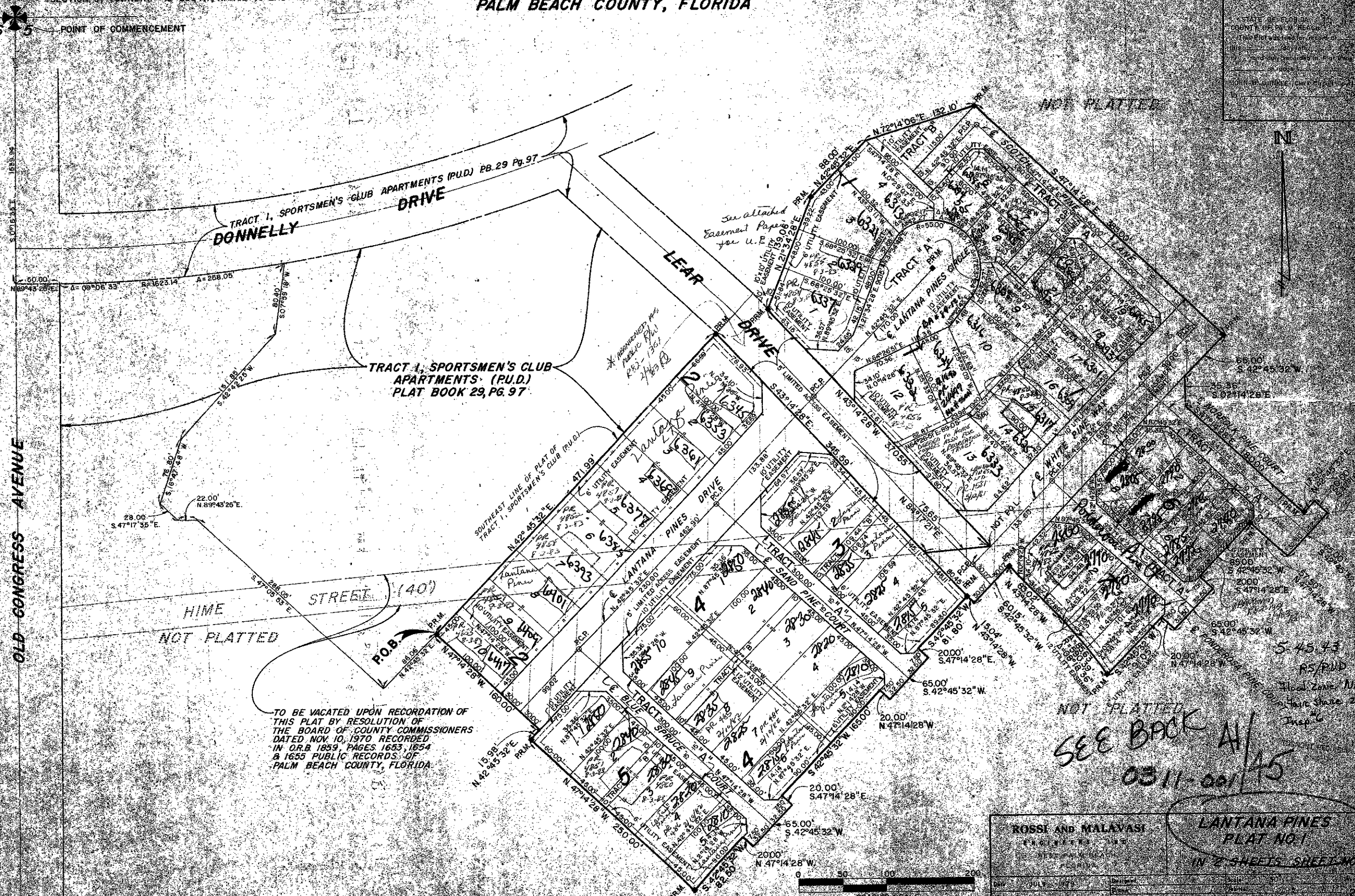
SPORTSMEN'S CLUB - P.U.D.

IN SECTION 5, TOWNSHIP 45 SOUTH, RANGE 43 EAST
PALM BEACH COUNTY, FLORIDA

45

NORTHWEST CORNER OF SECTION 5, TOWNSHIP 45 SOUTH, RANGE 43 EAST

POINT OF COMMENCEMENT



TO BE VACATED UPON RECORDATION OF THIS PLAT BY RESOLUTION OF THE BOARD OF COUNTY COMMISSIONERS DATED NOV. 10, 1970 RECORDED IN O.R.B. 1859, PAGES 1653, 1654 & 1655 PUBLIC RECORDS OF PALM BEACH COUNTY, FLORIDA

NOT PLATTED

NOT PLATTED

SEE BOOK A/ 0311-001/45

ROSSI AND MALAVASI ENGINEERS, INC.	
DESIGNED BY	
CHECKED BY	
DATE	
SCALE	

LANTANA PINES PLAT NO. 1
IN 2 SHEETS SHEET NO. 1

